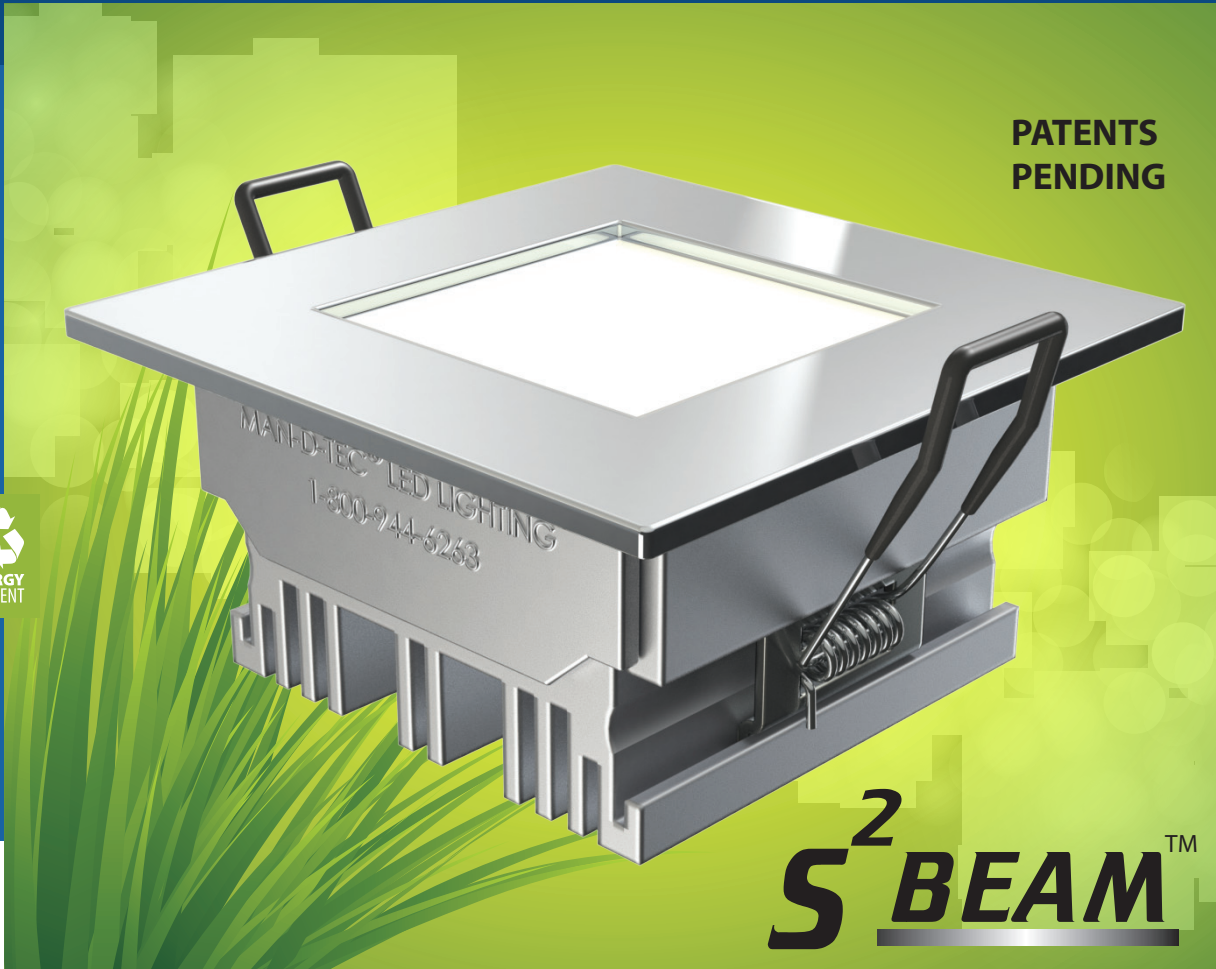




S2BEAM
REVISION: B
EFFECTIVE: 4/2015

S²BEAM™

LED LIGHT FIXTURES FOR ELEVATORS



**PATENTS
PENDING**



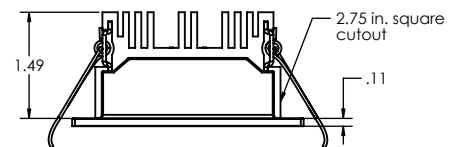
S²BEAM™

S²BEAM by Man-D-Tec®

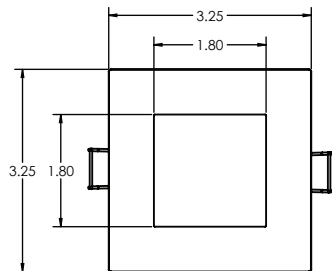
**UNIQUE, PATENT PENDING, SQUARE LED LIGHTING SYSTEM,
DESIGNED SPECIFICALLY FOR ELEVATOR APPLICATIONS.**

Warm white 4 watt LED output that produces 262 lumens per fixture. Systems include a power supply with pre-installed dimmer control and prewired harnesses for easy installation. The square fixture design creates a unique look and the wide angle beam produces light output with even lighting (eliminates pixilation).

Product Specifications on the back of page.



SIDE VIEW



FRONT VIEW

FOR LIGHT CONFIGURATIONS SEE
LIGHTING MATRIX



44BD
ELEVATOR CONTROL,
ELEVATOR ACCESSORY
E329545



1.800.944.6263



WWW.MANDTEC.COM

S2BEAM


REVISION: B
EFFECTIVE: 4/2015

S²BEAM™
SPECIFICATIONS

Fixture
(S²BEAM)

MATERIAL	Aluminum Casting		 44BD ELEVATOR CONTROL, ELEVATOR ACCESSORY E329545
DIMENSIONS	1.49" 2.75" x 2.75" sq. 3.25"	Overall Height Cutout Hole (Square Cutout) Overall Dimension	
MOUNTING	Spring Clips	Rubberized to reduce chatter (sound dampening)	
FINISHES	Black Brushed Polished White Gold	Powder Coat STANDARD #4 Silver Brushed Finish (Option) High Luster #8 Mirror Finish (Option) Powder Coat (Option) Powder Coat (Option)	
OUTPUT	262 Lumens <i>As per LM-79 report by an iAS Accredited Laboratory</i>	Warm White (Approx 2,856k)	 LED lighting facts LED Product Partner
LED	Wattage Reflector	4 Watts of LEDs Per Fixture Wide Angle SAVE EVEN MORE! Pre-Installed Dimmer Control is Included! <i>Adjust from 1 Watt to 4 Watts of LED Output Per Fixture</i>	
LUMINOUS EFFICACY	60.8	Lumens Per Watt	

Power Supply

MATERIAL	.060 Aluminum		 44BD ELEVATOR CONTROL, ELEVATOR ACCESSORY E329545
DIMMER	INCLUDED		
VOLTAGE	Input: 115 VAC (220VAC Also Available)		

Wiring

SECONDARY (OUTPUT) Pre-harnessed with quick connects at power supply and at each fixture

Emergency
(Optional)

ELS²-SB™
Powers (2) two S²Beam LED fixtures to meet ANSI 17.1 & ASME 17.3-2008 Elevator Code and mounts in S²Beam power Supply.

EXCEEDS A17.3 4-HOUR RUNTIME CODE REQUIREMENT FOR EMERGENCY LIGHTING.



MAN-D-TEC, INC.

8175 E. PARADISE LANE
SCOTTSDALE, AZ 85260

P. 480.998.0325
F. 480.998.0318

1.800.944.6263

WWW.MANDTEC.COM